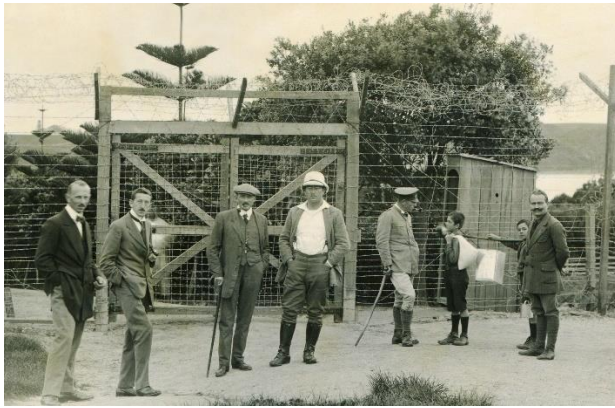


Motuihe Internment Camp additional photos



The barbed wire and gate indicate that this photo was taken after the escapees returned to the camp as security was improved at that time.

From left to right =

Mr A Ohle, Mr Wilhelm Holzett, Mr Alfred Shultz, von Luckner, boys – Kurt Stunzner and Fritz Stunzner who lived on the island with their parents in self contained accommodation. Mr R Hofmann.

Ex Governor of Samoa, Dr Schultz's house on Motuihe



A close-up view of the Governor's house, which was superior accommodation to that of the camp commandant whose house was smaller and stood behind on the left. Dr Schultz' house had six bedrooms and had previously been occupied by the Motuihe Island farm manager.

Most POW's knew that Fatu was Erich's adopted son but the general misimpression among the New Zealand authorities was that he was Dr Schultz' valet. On his arrival in Auckland on board the Navua in September 1914 amongst

the German party, Fatu's exotic presence had tantalised the spectators and press. One newspaper correspondent commented on the surprising presence of a "dark-skinned gentleman who bore himself with consummate ease, and smiled a wide expansive smile that only momentarily disappeared to return to still more opulent happiness. He wore knee-breeches, a dent hat and earrings, and turned out to be the personal servant of Dr Schultz. His nationality is still a source of wonder to the crowd."