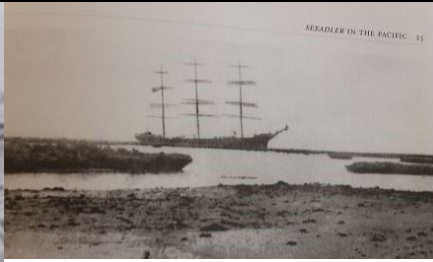
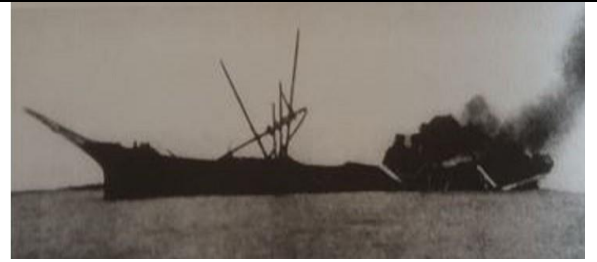




The Seeadler crew sinking a ship in the Atlantic.



Seeadler at anchor off the reef at Maupelia.



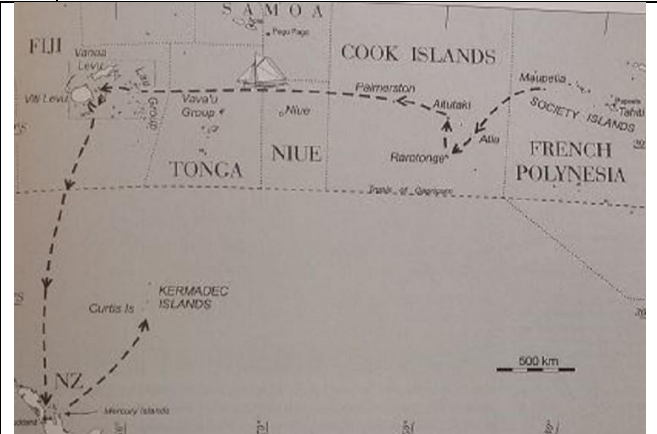
Seeadler on fire after the attempt to blow her masts up to conceal the ship.



French Polynesia showing Maupelia (French spelling = Maupihaa)



Maupelia where Seeadler was wrecked



Map of von Luckner's 3,000 km sail across the Pacific.



The jetty on Wharf Bay beach where the escapees left from.



The flag made from a bed sheet in Auckland Museum.



The Govt emergency store at the Kermadecs.



Ripapa Island prison in Lyttleton harbour where von Luckner and Kirchiess were reimprisoned after their escape.



Advert for one of von Luckner's talks during his 1937/8 tour.



Von Luckner buying a poppy from a Maori woman on 22 April 1938

Von Luckner buys an ANZAC poppy from a Maori woman in Auckland during his 1937/8 tour.